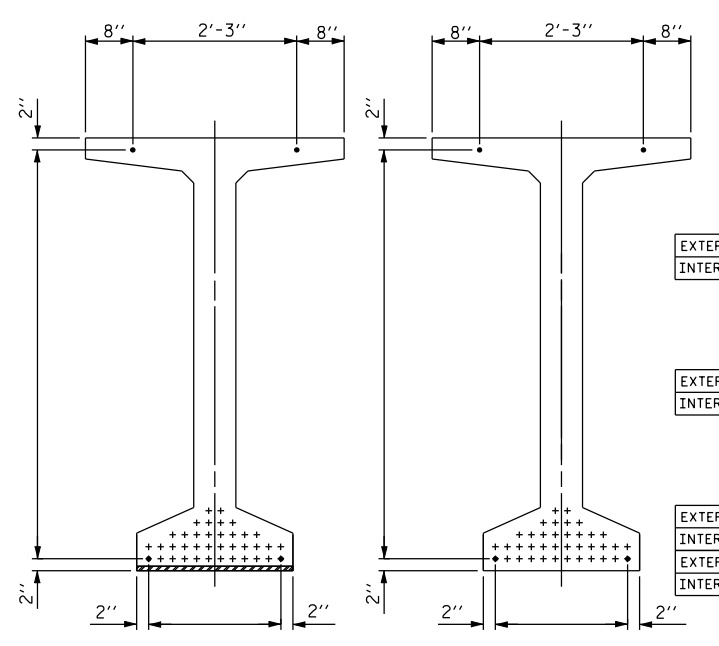


CL 1/2" Ø FORMED HOLE. SEE ELEVATION FOR LOCATION. FOR DIM. "A", "B" & "C" SEE "INTERMEDIATE STEEL DIAPHRAGMS" SHEET.)

DEBONDING LEGEND

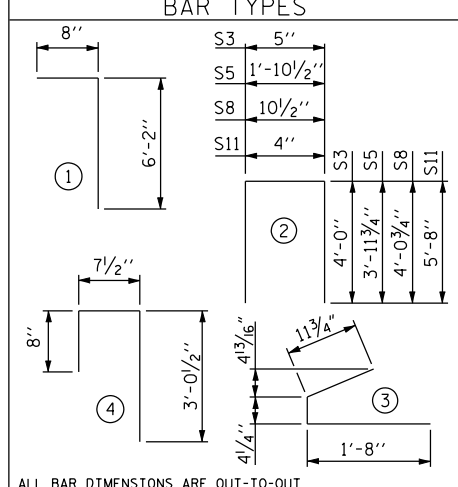
- FULLY BONDED STRANDS
- STRANDS DEBONDED FOR 4'-0" FROM END OF GIRDER
- ▲ STRANDS DEBONDED FOR 6'-0" FROM END OF GIRDER
- STRANDS DEBONDED FOR 8'-0" FROM END OF GIRDER
- ◆ STRANDS DEBONDED FOR 10'-0" FROM END OF GIRDER
- STRANDS DEBONDED FOR 12'-0" FROM END OF GIRDER



0.6" Ø L. R. GRADE 270 STRANDS		
AREA (SQUARE INCHES)	ULTIMATE STRENGTH (LBS. PER STRAND)	APPLIED PRESTRESS (LBS. PER STRAND)
0.217	58,600	43,950

REINFORCING STEEL FOR ONE GDR					
BAR	NUMBER	SIZE	TYPE	LENGTH	WEIGHT
EXTERIOR GDR. S1		#4	1	6'-10"	
INTERIOR GDR. S1		#4	1	6'-10"	
S2	24	#5	1	6'-10"	171
S3	14	#4	2	8'-5"	79
S4	84	#4	3	3'-0"	168
S5	1	#5	2	9'-10"	10
EXTERIOR GDR. S6		#5	4	4'-4"	
INTERIOR GDR. S6		#5	4	4'-4"	
* S7	10	#5	STR	3'-8"	38
S8	2	#5	2	9'-0"	19
S9		#5	STR	3'-3"	
S10	1	#3	STR	1'-10"	1
EXTERIOR GDR. S11		#5	2	11'-8"	
INTERIOR GDR. S11		#5	2	11'-8"	
EXTERIOR GDR. S12		#4	STR	8'-0"	
INTERIOR GDR. S		#4	STR		

* NOTE: S7 BARS SHALL BE BENT BEFORE SHIPMENT. HEAT BENDING SHALL NOT BE ALLOWED.



ALL BAR DIMENSIONS ARE OUT-TO-OUT

QUANTITIES FOR ONE GIRDER			
REINFORCING STEEL	PSI CONCRETE	0.6" Ø L.R. STRANDS	
		LB.	C.Y.
EXTERIOR GIRDER			
INTERIOR GIRDER			

GIRDERS REQUIRED		
NUMBER	LENGTH	TOTAL LENGTH

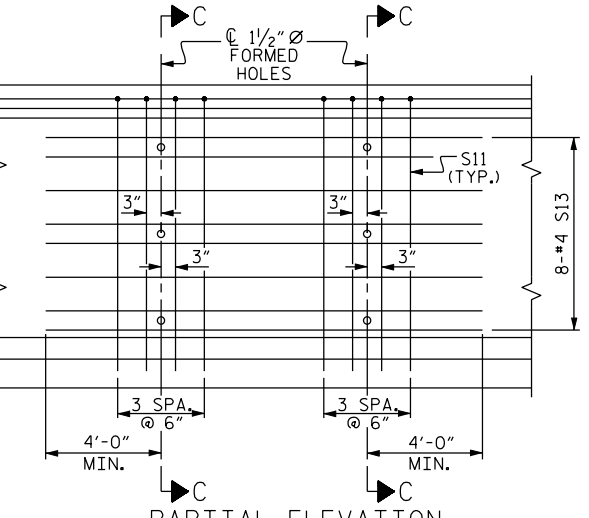
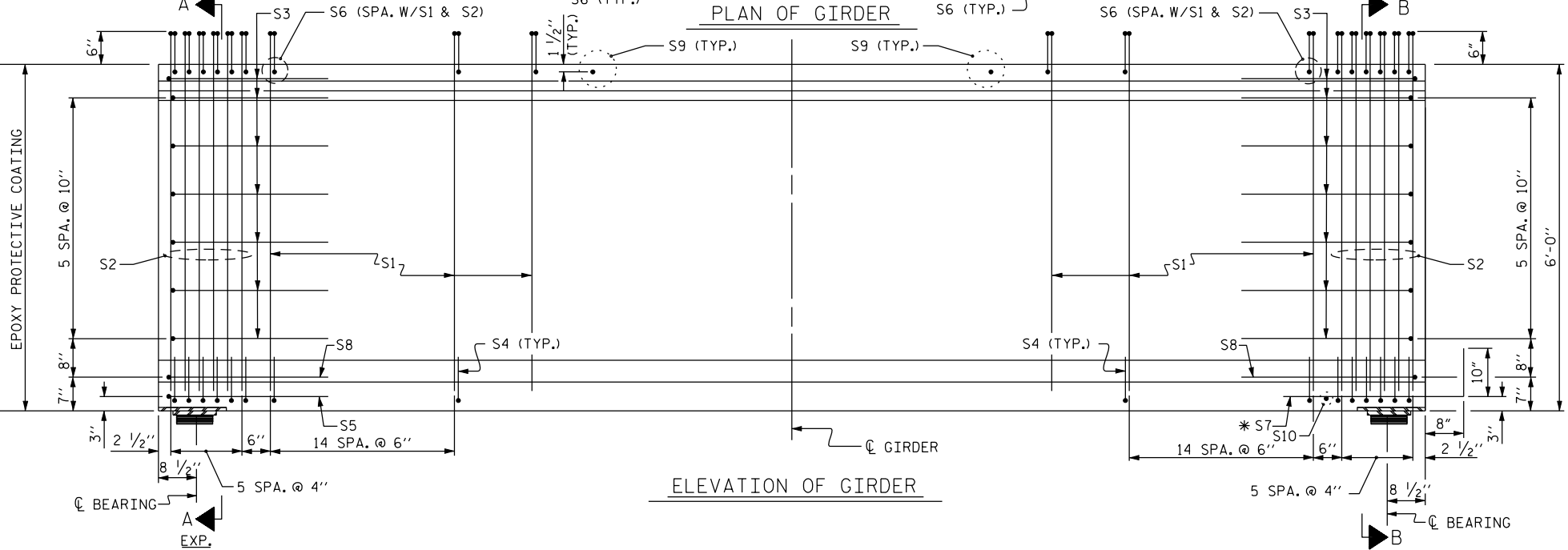
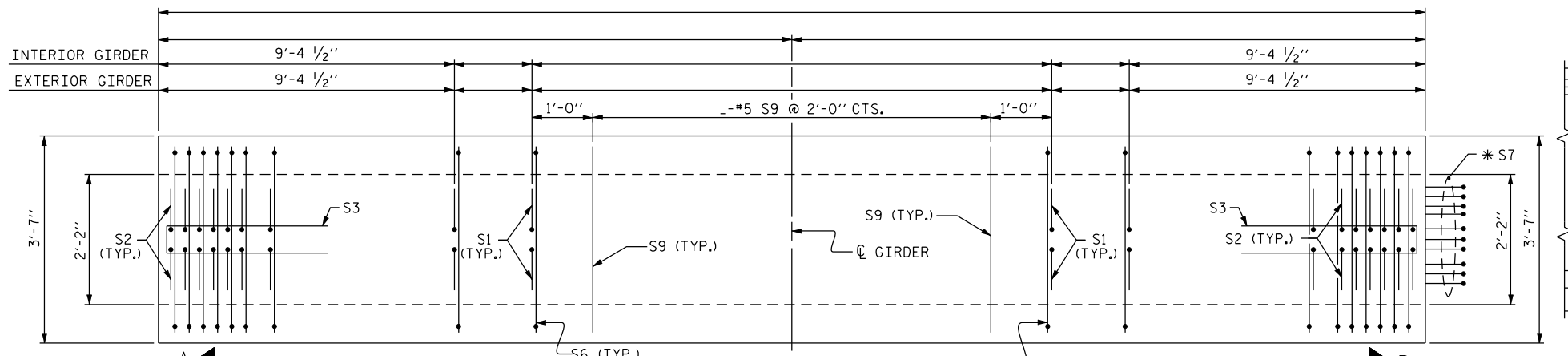
PROJECT NO. _____ COUNTY _____

STATION: _____ SHEET _ OF _

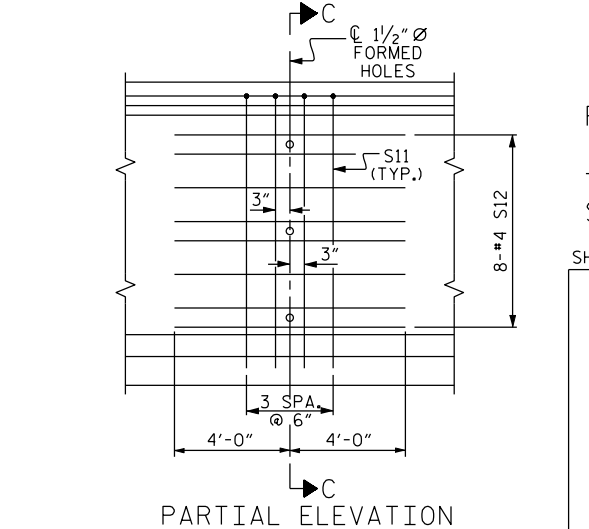
STATE OF NORTH CAROLINA
DEPARTMENT OF TRANSPORTATION
RALEIGH

STANDARD
72" PRESTRESSED CONCRETE
MODIFIED BULB TEE
CONTINUOUS FOR LIVE LOAD

REVISIONS						SHEET NO.
NO.	BY:	DATE:	NO.	BY:	DATE:	
1			3			TOTAL SHEETS
2			4			



SHOWING INTERMEDIATE STEEL DIAPHRAGM REINFORCING STEEL FOR GIRDER Nos. ----- (FOR INTERIOR GDRS. WITH SKEW < 70° OR SKEW > 110°)



SHOWING INTERMEDIATE STEEL DIAPHRAGM REINFORCING STEEL FOR GIRDER Nos. ----- (FOR ALL EXTERIOR GIRDERS AND INTERIOR GIRDERS WITH 70° ≤ SKEW ≤ 110°)

ASSEMBLED BY :	DATE :
CHECKED BY :	DATE :
DRAWN BY : EEM 2/6/97	REV. 8/16/99 RWW/LES
CHECKED BY : VAP 2/6/97	REV. 10/17/00 RWW/LES
	REV. 5/1/06R TLA/GM